

LOAD CELL HM9B

- HM9B load cells are available for manifold accurate measurement in the capacities 10t to 50t.
- Alloy steel, nickel plated, hermetically sealed oil-proof, waterproof and anti-corrosion, suitable for multiform environments.
- Dual shear beam, suitable for electronic truck scale, track scale and other electronic weighing devices.

Important Features

- Capacities: 10t~50t.
- High accuracy.
- Alloy steel construction.
- Easy installation, reliable performance.
- With OIML approval: (PTB: D09-06.08).

Accessories:

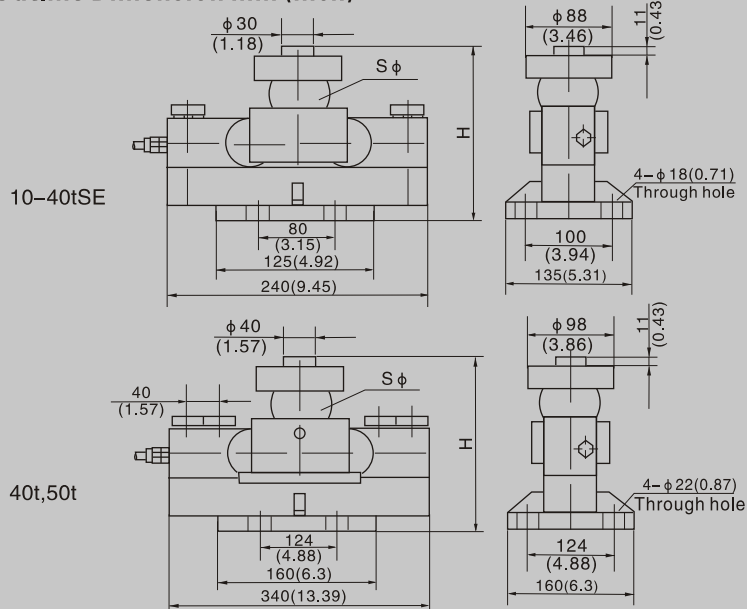
Button, steel ball, cup, base plate.



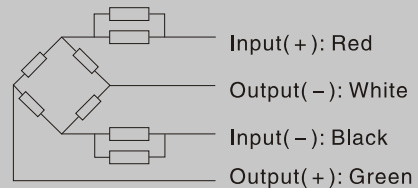
Specifications

Capacity	t	10/20/25/30/40SE/40/50				
		C1	C2	C3	A5M	B10M
Accuracy class				OIML R60 C3		
Maximum number of verification intervals						
Minimum load cell verification interval	Π_{max}	1000	2000	3000	5000	10000
Combined error	V_{min}	$E_{max}/3000$	$E_{max}/5000$	$E_{max}/7500$	$E_{max}/15000$	$E_{max}/10000$
Creep	(%FS)	$\leq \pm 0.050$	$\leq \pm 0.030$	$\leq \pm 0.020$	$\leq \pm 0.026$	$\leq \pm 0.050$
Temperature effect on sensitivity	(%FS/30min)	$\leq \pm 0.038$	$\leq \pm 0.023$	$\leq \pm 0.016$	$\leq \pm 0.017$	$\leq \pm 0.040$
Temperature effect on zero	(%FS/10°C)	$\leq \pm 0.028$	$\leq \pm 0.017$	$\leq \pm 0.011$	$\leq \pm 0.013$	$\leq \pm 0.040$
Output sensitivity	(%FS/10°C)	$\leq \pm 0.047$	$\leq \pm 0.029$	$\leq \pm 0.019$	$\leq \pm 0.014$	$\leq \pm 0.020$
Input resistance	(mv/v)	2.0 ± 0.002				
Output resistance	(Ω)	700 ± 7				
Insulation resistance	(Ω)	703 ± 4				
Zero balance	(MΩ)	≥ 5000(50VDC)				
Temperature, compensated	(%FS)	1.5				
Temperature, allowed	(°C)	-10 ~ +40				
Excitation, Recommended	(°C)	-35 ~ +65				
Excitation, Max.	(V)	5 ~ 12(DC)				
Safe overload	(V)	18(DC)				
Ultimate overload	(%FS)	120				
Corner correction	(%FS)	150				

Outline Dimension mm (inch)



Capacity	10t	20t~40tSE	40t,50t
Dimension			
H	195 (7.68)	225 (8.86)	267 (10.51)
S ϕ	50 (1.97)	76 (2.99)	82 (3.22)



Wiring:

- Shielded, 4 conductor cable : $\phi 5.5mm$.
- Standard cable length: 12m.
- Cable type and cable length for customer's own application are available on request.